

PERFORMANCE LITE PS-8

8-Blade HVLS Ceiling Fan

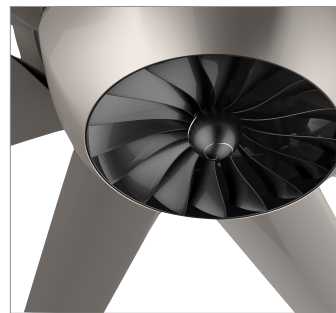


KEY FEATURES

- Proprietary aluminum airfoils and curved wingtips designed for maximum airflow with minimal power consumption
- High-efficiency, high-torque, maintenance-free permanent magnet synchronous motor (PMSM)
- Near-silent operation at <41 dBA*
- Rugged yet sleek and refined construction for reliability and style
- In-house engineering and vertically integrated manufactured components
- Promotes IEQ (indoor environmental quality) per ASHRAE 55



* Under laboratory conditions



Diameter: 8' - 14' (custom available)

■ Proprietary Airfoils

Inspired by Swifter's innovations in industrial and equipment fan technology, the Performance Lite's eight marine-grade anodized aluminum blades deliver industry-leading CFM/Watt efficiency.

■ Premium Direct Drive Motor

The IP55-rated permanent magnet synchronous motor (PMSM) reduces maintenance needs and ensures lasting reliability, eliminating issues typically associated with gearbox motors.

■ Variable-Speed Controller

Featuring a ground-level variable frequency drive for ease of access and optional reverse rotation capability suitable for winter destratification.

■ Limited Warranty

15-year mechanical warranty; 5-year electrical warranty. [Warranty Policy](#).

■ Building Communication

Command and monitor with optional building integration through BACnet, LonMark, or MODBUS protocols. Additional demand control based on differences in temperature and humidity readings.

■ Flexible Mounting Options

Includes standard mounting hardware for multiple configurations such as I-beams, solid beams, angle iron, pitched roofs, and square tubes, with optional kits for purlins and other structures.

■ Redundant Safety Features

Featuring airfoil blade retainers, steel guy cables, and optional fire relay integration with an emergency shut-off switch.

PERFORMANCE LITE PS-8

8-Blade HVLS Ceiling Fan



TECHNICAL SPECIFICATIONS

| | | PS-8-14 | PS-8-12 | PS-8-10 | PS-8-8 |
|--------------------------|---------------------------------|--|-----------------------|-----------------------|-----------------------|
| Dimensions & Performance | Diameter (D) [custom available] | 14 ft | 12 ft | 10 ft | 8 ft |
| | Airflow (Cubic Feet per Minute) | 135,400 CFM | 109,260 CFM | 86,390 CFM | 54,090 CFM |
| | Max. Affected Area* | 6,717 ft ² | 4,704 ft ² | 3,509 ft ² | 2,615 ft ² |
| | Max. RPM | 80 | 90 | 100 | 120 |
| | Weight** | 90 lbs (41 kg) | 84 lbs (38 kg) | 77 lbs (35 kg) | 68 lbs (31 kg) |
| | Downrod Length | 39.5 in. standard (custom lengths available) | | | |
| | Forward/Reverse Capabilities | Yes (optional) | | | |
| | Input Power | 200-240 VAC \pm 10%, 50/60Hz, 1 Φ standard (110-120 VAC / 400-480 VAC optional) | | | |
| | Sound Level at Max. Speed*** | 39 dBA | 39 dBA | 40 dBA | 41 dBA |
| | Safety Features | Airfoil blade retainers and steel guy cables standard. Fire relay integration and emergency shut off switch optional. | | | |
| Motor (PMSM) | Motor Rating | 1.0 HP | | | |
| | Full Load Current at 220 V | 2.0 A | | | |
| | Full Load Power at 220 V | 400 W (0.54 HP) | 300 W (0.40 HP) | 200 W (0.27 HP) | 150 W (0.20 HP) |
| | Max. Operating Temperature | 140°F (60°C) | | | |
| | IP Rating | IP55 | | | |
| | Insulation Class | IEC/NEMA Class F | | | |
| | Bearing L10 Life | 100,000 hours per ABMA standards | | | |

* Fan plane at 20 feet height from ground level

** Total hanging weight with standard downrod

*** Under laboratory conditions

