

April 2025



**Facility** Fans | Product Catalog



# Perform Better. Achieve More.

With over 25 years of expertise in developing air movement solutions for buildings and equipment manufacturers, Swifter® Fans designs its products with comfort, health, efficiency and productivity at the forefront. We engineer innovative fan solutions that maximize airflow within a wide range of conditioned and non-conditioned applications.



## Year-Round Comfort

Air tends to build up in areas without proper airflow. Swifter Fans de-stratify the air, eliminating both hot and cold spots and mixing layers of air together, resulting in consistent air quality throughout a space.



## Enhanced Health

Combating common air-related health and safety issues is important. Swifter Fans increase ventilation rates and improve air distribution, reducing air-quality issues such as indoor pollution and excess humidity.



## Energy Efficiency

HVAC systems can be inefficient in both hot and cold climates. Swifter Fans help distribute the air evenly so existing HVAC systems can operate more efficiently at moderate settings.



## Improved Productivity

Comfortable workers are focused workers. Swifter Fans promote productivity in spaces by reducing employee fatigue, improves concentration, and minimizes temperature-related discomfort.



## Facility Fans

Swifter® Facility Fans are the newest and most innovative HVLS (High Volume, Low Speed) and HVHS (High Volume, High Speed) fans on the market. Decades of engineering the world's best Industrial Fans taught us how to perfect airflow. Swifter's Facility Fan technology evolved from this patented precision manufacturing, translating proven fiberglass designs into ultra-efficient aluminum airfoils. Experience superior air movement from the company that's been pushing the boundaries of fan efficiency for years.

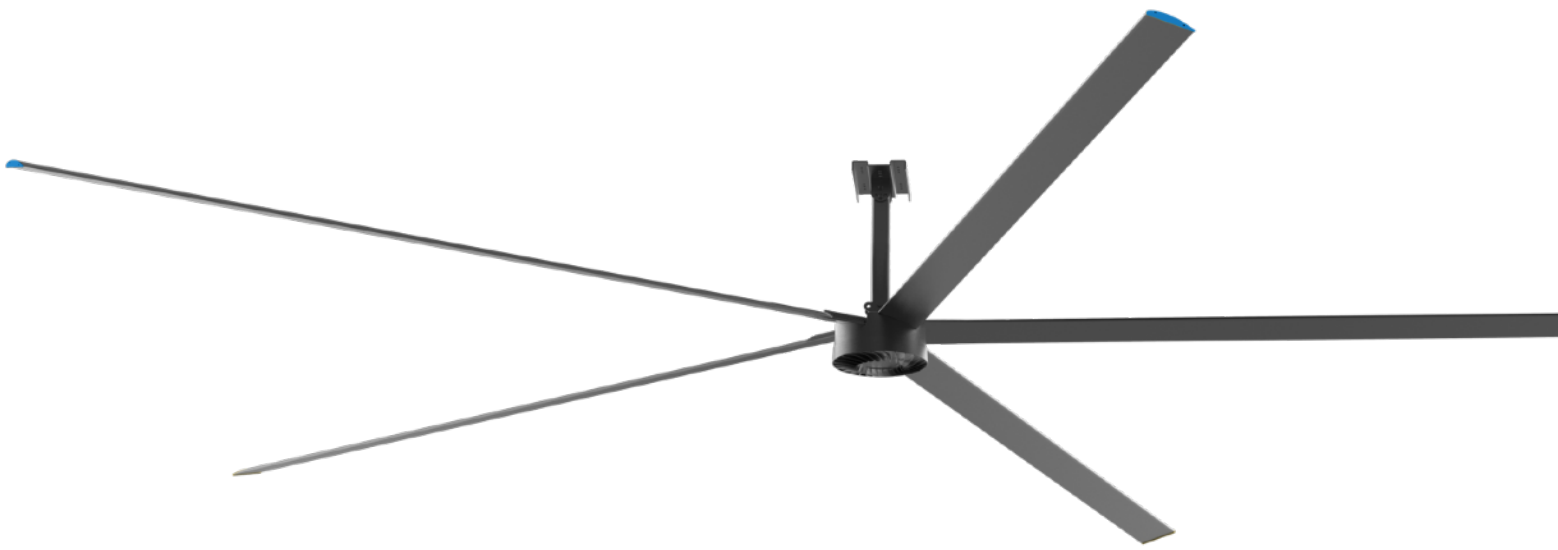
### **Assisting all types of industries to improve & succeed**

Agriculture	Commercial	Hospitality	Public Spaces
Automotive	Data Center	Industrial	Sports/Fitness
Aviation	Education	Manufacturing	Warehouse









# Aura Pro

Model: PS-L5

*5 Blade High Volume, Low Speed (HVLS) Ceiling Fan*

- Available diameters: 14', 16', 20' & 24' (custom diameters also available within these ranges)
- High-efficiency, high-torque, maintenance-free PMSM motor
- Super bright LED light
- IP 57 rated
- UL 507 certified
- IEC/NEMA Class F insulation
- Promotes IEQ (indoor environmental quality) per ASHRAE 55

Fan	# of Airfoils	Diameter	Min/Max Speed	Full Load Power	Sound Level at Max Speed	Fan Weight
<b>PS-L5-14</b>	5	14.0ft (4.3m)	25/75 RPM	280 W	<40 dBA	75 lbs. (34 kg)
<b>PS-L5-16</b>		16.0ft (4.9m)	25/75 RPM	440 W		120 lbs. (54 kg)
<b>PS-L5-20</b>		20.0ft (6.1m)	25/60 RPM	620 W		133 lbs. (60 kg)
<b>PS-L5-24</b>		24.0ft (7.3m)	25/55 RPM	720 W		153 lbs. (69 kg)



# Aura Lite

Model: PS-L6

*6 Blade High Volume, Low Speed (HVLS) Ceiling Fan*

- Available diameters: 8', 10' & 12' (custom diameters also available within these ranges)
- High-efficiency, high-torque, maintenance-free PMSM motor
- Super bright LED light
- IP 57 rated
- UL 507 certified
- IEC/NEMA Class F insulation
- Promotes IEQ (indoor environmental quality) per ASHRAE 55

Fan	# of Airfoils	Diameter	Min/Max Speed	Full Load Power	Sound Level at Max Speed	Fan Weight
<b>PS-L6-8</b>	6	8.2ft (2.5m)	25/120 RPM	220 W	<40 dBA	47 lbs. (21 kg)
<b>PS-L6-10</b>		9.8ft (3.0m)	25/110 RPM	286 W		52 lbs. (24 kg)
<b>PS-L6-12</b>		11.8ft (3.6m)	25/100 RPM	418 W		55 lbs. (25 kg)



# Performance Pro

Model: PS-5

*5 Blade High Volume, Low Speed (HVLS) Ceiling Fan*

- Available diameters: 16', 18', 20' & 24' (custom diameters also available within these ranges)
- High-efficiency, high-torque, maintenance-free PMSM motor
- IP 55 rated
- UL 507 certified
- IEC/NEMA Class F insulation
- Promotes IEQ (indoor environmental quality) per ASHRAE 55

Fan	# of Airfoils	Diameter	Max Speed	Full Load Power	Sound Level at Max Speed	Fan Weight
<b>PS-5-16</b>	5	16.0ft (4.9m)	76 RPM	1,000 W	<40 dBA	238 lbs. (108 kg)
<b>PS-5-18</b>		18.0ft (5.5m)	68 RPM	1,000 W		247 lbs. (112 kg)
<b>PS-5-20</b>		20.0ft (6.1m)	62 RPM	1,100 W		265 lbs. (120 kg)
<b>PS-5-24</b>		24.0ft (7.3m)	54 RPM	1,500 W		273 lbs. (124 kg)





# Performance Lite

Model: PS-8

*8 Blade High Volume, Low Speed (HVLS) Ceiling Fan*

- Available diameters: 8', 10', 12' & 14' (custom diameters also available within these ranges)
- High-efficiency, high-torque, maintenance-free PMSM motor
- IP 55 rated
- IEC/NEMA Class F insulation
- Promotes IEQ (indoor environmental quality) per ASHRAE 55

Fan	# of Airfoils	Diameter	Max Speed	Full Load Power	Sound Level at Max Speed	Fan Weight
<b>PS-8-8</b>	8	8.0ft (2.4m)	120 RPM	150 W	<40 dBA	68 lbs. (31 kg)
<b>PS-8-10</b>		10.0ft (3.0m)	100 RPM	200 W		77 lbs. (35 kg)
<b>PS-8-12</b>		12.0ft (3.7m)	90 RPM	300 W		84 lbs. (38 kg)
<b>PS-8-14</b>		14.0ft (4.3m)	80 RPM	400 W		90 lbs. (41 kg)



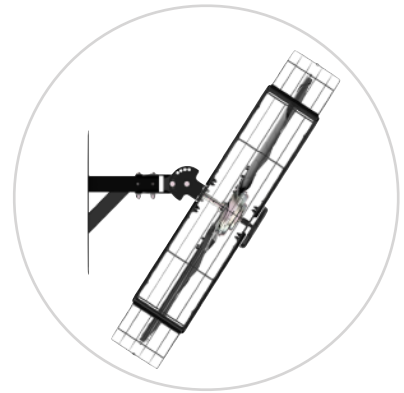
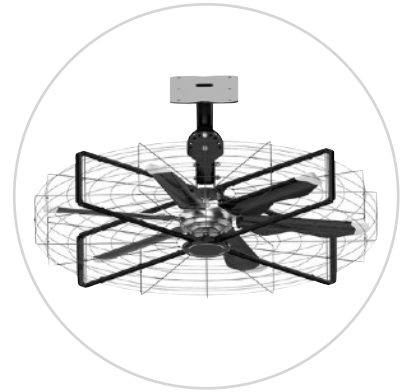
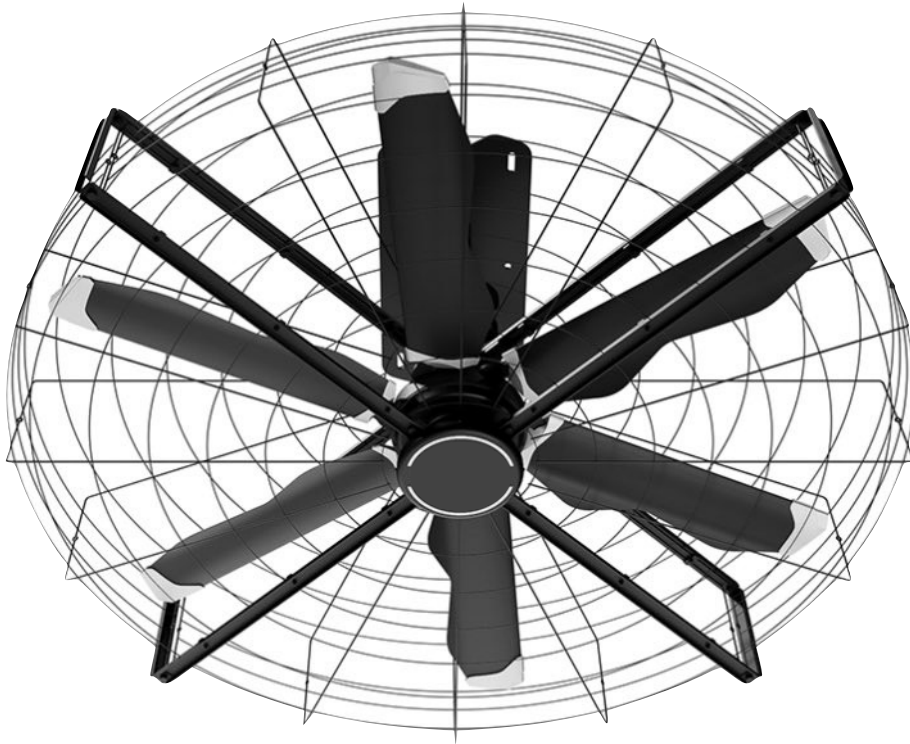
# Mobile Pro

Model: MF-K6

*6 Blade High Volume, High Speed (HVHS) Mobile Fan*

- Available diameters: 5.5' & 6.5'
- High-efficiency, high-torque, maintenance-free PMSM motor
- Pre-assembled in a heavy-duty steel cage
- IEC/NEMA Class F insulation
- Equipped with highly durable caster wheels and side handles for ease of mobility
- IP 55 rated

Fan	Diameter	Input Power and Required Breaker	Sound at Max Speed	Fan Weight	Air Volume	Full Load Current
<b>MF-K6-5</b>	5.5 ft	1 $\Phi$ , (220) VAC $\pm$ 10%, 50 / 60 Hz 120 VAC optional	<43 dBA	335 lbs.	25,530 CFM	2.0 A
<b>MF-K6-6</b>	6.5 ft			388 lbs.	42,660 CFM	2.7 A



# Scalar Pro

Model: WF-K6

*6 Blade High Volume, High Speed (HVHS) Wall/Ceiling-Mounted Fan*

- Available diameters: 6.5'
- High-efficiency, high-torque, maintenance-free PMSM motor
- Heavy-duty wall-mount hardware
- Pre-assembled in a steel frame with OSHA-compliant cage protection
- IEC/NEMA Class F insulation
- IP 55 rated

Fan	Input Power and Required Breaker	Sound at Max Speed	Fan Weight	Air Volume	Full Load Current	Motor
<b>WF-6</b>	1 $\Phi$ , (220) VAC $\pm$ 10%, 50 / 60 Hz 120 VAC optional	<43 dBA	300 lbs.	42,660 CFM	2.7 A	PMSM, Direct Drive



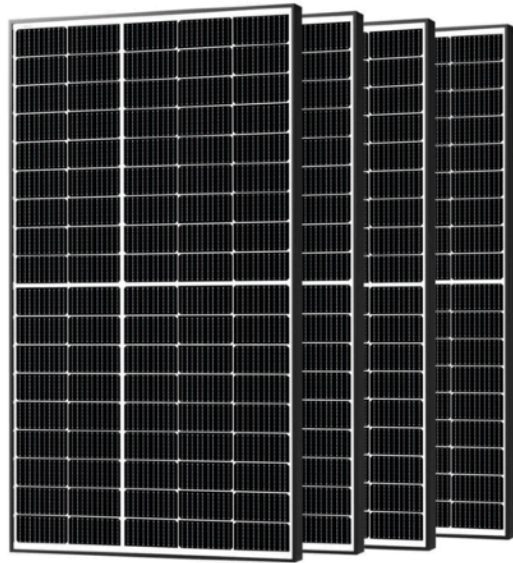


# Touchscreen Multi-Fan Controller

*Touchscreen Controller for HVLS Ceiling Fans*

**Master your environment** and control your facility's airflow with our user-friendly touchscreen interface. The Swifter® Touchscreen Multi-Fan Controller puts precision control of your HVLS fan network at your fingertips.

- Industrial-grade durability and vibrant color touchscreen (multiple sizes)
- Control multiple fans individually or in synchronized groups
- Password-protected security levels for different users
- Optional advanced functionality:
  - Custom scheduling with seven-day programming
  - Demand control based on differences in operating temperatures
  - Full integration with BMS over BACnet protocol



# Dual Power Solar Controller

Models: HSP-4-800

*Hybrid Solar Power Controller for HVLS Ceiling Fans*

**The first of its kind** Modular Dual Power Solar Fan Controller System uses patented technology to seamlessly balance AC and DC inputs as needed to operate both HVLS and HVHS fans. The revolutionary Dual Power Controller provides the most efficient way to operate your fan systems and can significantly reduce fan operating costs by minimizing the use of AC power and help maintain operations when AC power is unavailable.

- The HSP system includes the Dual Power Solar Controller and solar panels
- Available as a factory-configured option with new Swifter® Fan purchases or as an upgrade for pre-existing fan installations
- Using the controller in combination with AC/DC power allows the user to operate the fan at peak performance and achieve the highest possible efficiency by drawing as much available power from the sun and supplementing the balance requisite power from the AC grid as needed

Complete technical specifications and more can be found at [SwifterFans.com](https://www.SwifterFans.com)

